

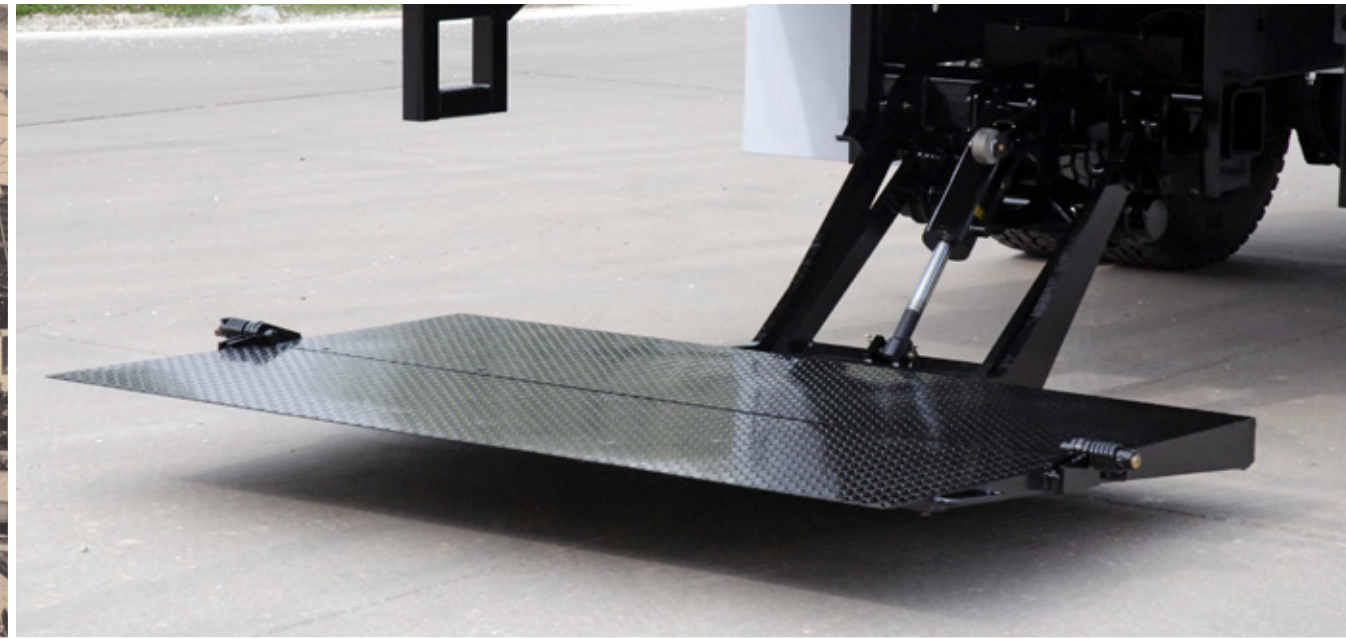
REGEN RAILTRAC™

THE ALL-ELECTRIC LIFTGATE™



ANTHONY
LIFTGATES, INC.





ANTHONY
LIFTGATES, INC.

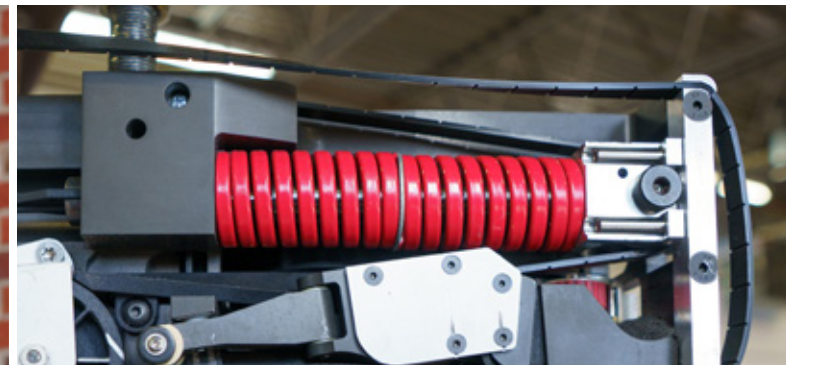
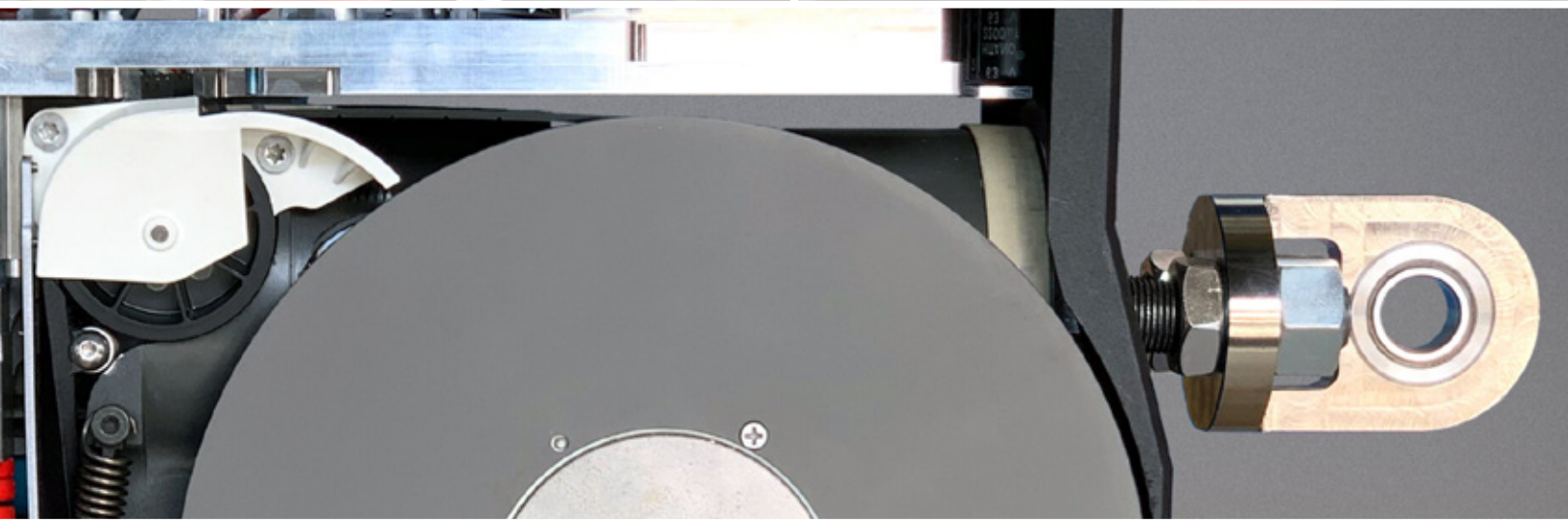
A LEGACY OF INNOVATION

William C. Anthony founded the Anthony Company in 1917 with the invention of a gravity dump box for the Ford Model T. Its success marked the beginning of a long legacy of innovative trucking products from the Anthony brand.

In 1941, Anthony invented the liftgate, which enhanced the utility of trucks around the world. With the ReGEN RAILTRAC, Anthony is reinventing liftgates once again and raising performance to new heights.



No. 2 Plant - Line Assembly on Bomb Trailers for the United States Navy.



POWERED BY RISE™

In 2018, Anthony Liftgates teamed up with the motion specialists at RISE™ Robotics to build a liftgate that excels where others fail.

The resulting actuation technology is the heart of the ReGEN, and it is what empowers it to do what traditional liftgates cannot.

© Copyright 2022 by Liftwave, Inc. dba RISE™ Robotics. All Rights Reserved. US Patent 11255416
Patent Pending: WO2019/014259

© Copyright 2021 by Liftwave, Inc. dba RISE™ Robotics. All Rights Reserved. Multiple use
actuation system for Liftgate is US application 17/442,857



THE ALL-ELECTRIC LIFTGATE™

The heart of liftgates has been the same for decades, an electric pump circulating oil. This traditional concept has made countless deliveries possible but does so with the tradeoffs of high energy consumption, poor operator feedback, weather sensitivity, environmental impact and substandard reliability.

It is time for something better.

The new Anthony ReGEN RAILTRAC™ solves these problems by packing cutting-edge technology into a tough liftgate structure, elevating liftgate performance to a whole new level.

Shockingly Efficient. Completely Connected. Exceptional Performance.™





ENERGY EFFICIENT

ReGEN is driven by a pair of sealed, belt-driven actuators that output hydraulic-like forces but consume far less energy. Plus, its namesake regeneration capability allows it to harvest the kinetic energy of a downward cycle and feed it back to the power supply. This combination of powerful but efficient motion and regeneration capability slashes the energy required to operate the machine by between fifty and one hundred percent.

In fact, on an optimal delivery route, the ReGEN will feed more energy back to the vehicle than it consumes, cutting its net electrical load on the vehicle to zero.

© Copyright 2022 by Liftwave, Inc. dba RISE™ Robotics. All Rights Reserved. US Patent 11255416 Patent Pending: WO2019/014259

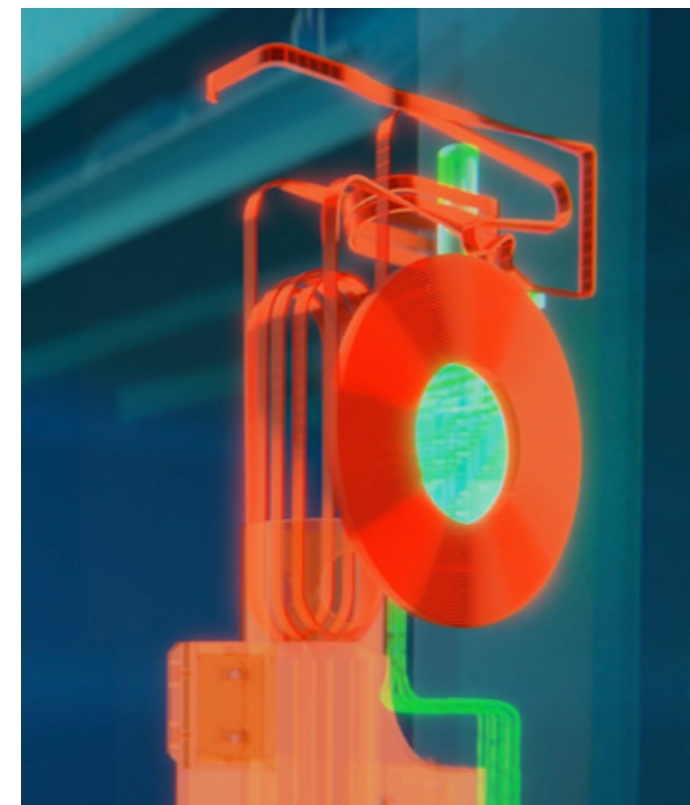
© Copyright 2021 by Liftwave, Inc. dba RISE™ Robotics. All Rights Reserved. Multiple use actuation system for Liftgate is US application 17/442,857

SMOOTH & PRECISE

ReGEN moves with incredible control and precision. Motion is automatically tuned to eliminate abrupt starts and stops whenever the switch is activated. When deploying or stowing the platform, ReGEN moves at a gentle pace to minimize noise and mechanical wear.

Both cylinders are synced to keep the platform level to within a fraction of an inch from side to side.

ReGEN also sports an exclusive “white glove mode” which reduces travel speed at the touch of a button, enabling operators to lift and lower delicate cargo with the utmost care.



READY FOR ALL SEASONS

Extreme cold is an enemy of traditional liftgates. As temperature drops, oil becomes thicker and its flow through the system slows to a crawl. The result is a machine that can move poorly in the cold, and more energy is required to overcome these effects.

Since ReGEN contains no hydraulic oil, cold temperature does not affect performance, and movement is the same whether you are delivering in Minneapolis in winter or Houston in summer.

© Copyright 2022 by Liftwave, Inc. dba RISE Robotics. All Rights Reserved. US Patent 11255416 Patent Pending: WO2019/014259

PERFORMANCE WITHOUT COMPROMISE

On busy delivery routes, drivers want to get in, get out, and move on to the next stop, so sacrificing speed in the name of energy savings is not a good solution.

ReGEN provides both efficiency and performance with the fastest cycle times of any liftgate in its class to get the job done on time, every time.



BUILT FOR THE LONG HAUL

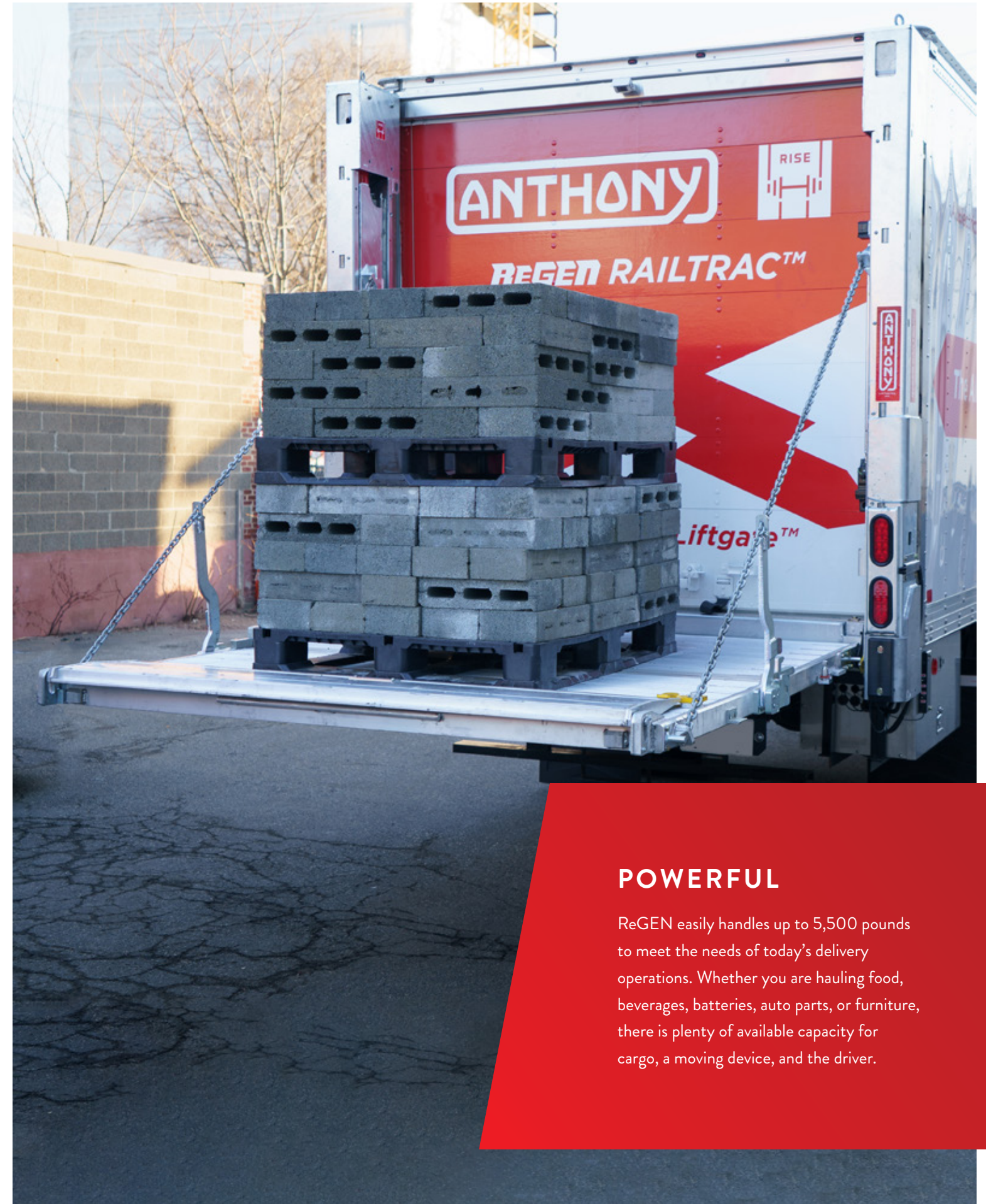
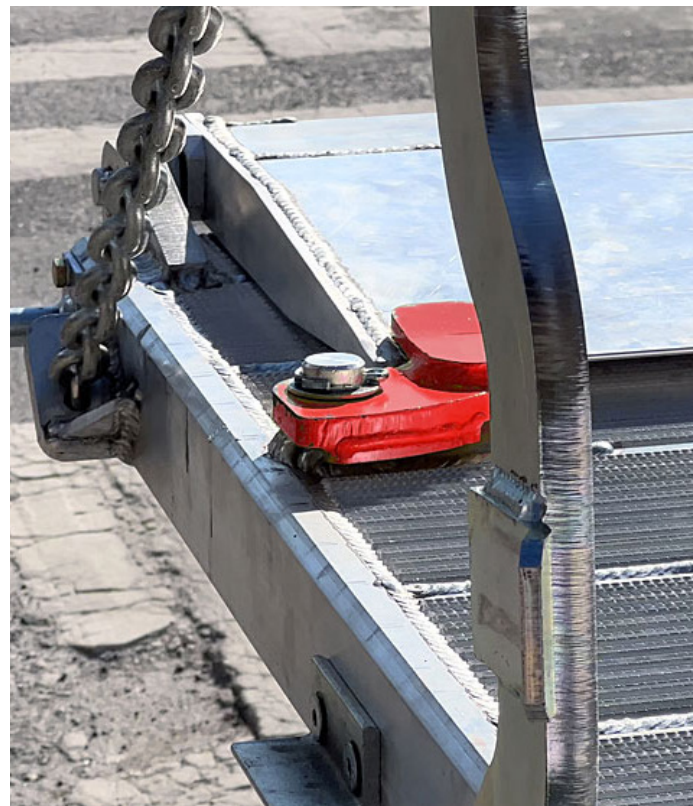
ReGEN was designed with decades of Anthony's industry experience building tough machines that stand up to life on the road, so every part is built to last.

Its columns are constructed from high-strength steel. The dock contact area is reinforced by a 5/8" plate steel impact wrap, then capped with impact-resistant UHMWPE¹ bumpers.

The liftgate structure is hot dip galvanized to eliminate corrosion for the life of the vehicle.

ReGEN's platform is constructed from interlocking aluminum extrusions. These interlocking extrusions are knurled for added traction and fully welded to create a platform deck that is lightweight and durable to handle all types of cargo.

¹ Ultra-high-molecular-weight polyethylene



POWERFUL

ReGEN easily handles up to 5,500 pounds to meet the needs of today's delivery operations. Whether you are hauling food, beverages, batteries, auto parts, or furniture, there is plenty of available capacity for cargo, a moving device, and the driver.



FLUID FREE & ENVIRONMENTALLY FRIENDLY

Hydraulic oil leaking on the pavement from a traditional liftgate is not a pretty sight, and cleanup can be a costly mess.

With ReGEN, there is never a risk of spilling hydraulic fluid from a broken hydraulic line, because there is simply no oil to spill in the first place.

In fact, there are no lubrication points on the entire lift. This not only saves the time of routine lubrication, but it also prevents dirty and unsightly pivoting joints that collect grease and grime.

© Copyright 2022 by Liftwave, Inc. dba RISE Robotics. All Rights Reserved.
US Patent 11255416 Patent Pending: WO2019/014259

WEATHERPROOF

ReGEN's drive system is sealed inside a protective case to block out environmental intrusion and placed inside the liftgate columns for an added level of protection. All electronics are encapsulated with proprietary compounds for the exclusion of water, moisture, and corrosive agents while ensuring that components withstand extreme vibrations and impacts.

Wire connections are made with premium automotive grade wiring and terminals.



OPERATOR FRIENDLY

The ReGEN lift features a classic dual control configuration to enable drivers to operate the lift from both the ground and from the platform.

For security, a unique toggle switch sequence wakes the lift from standby to guard against unauthorized operation.

Stowing the platform is as easy as running the lift to bed height and holding the fold switch until stopped. From there, ReGEN's sealed magnetic latches automatically engage to secure the lift in transit with no additional operator action.



INTEGRATED OPEN / CLOSE MECHANISM

Due to the size and weight of the large platforms, large rail liftgates use a hydraulic cylinder to open and close the liftgate platform. While it is an effective approach, a key drawback is that it requires a third actuation cylinder and another circuit in the hydraulic system. This open/close cylinder is often a key maintenance point on hydraulic lifts.

On the ReGEN RAILTRAC, the open and close functions are performed by the lift cylinders instead of a separate cylinder. This reduces the number of actuation members from three to two, and eliminates the maintenance associated with a separate actuator.

MAINTENANCE FREE V-TRACK & SLIDE RUNNERS

For decades, the unique V-Track construction of Anthony's MRT Series liftgates have boasted a low-maintenance alternative to the complex rollers on rail lifts of yesteryear. ReGEN takes that proven concept to the next level.

Inside each of ReGEN's columns is a precision-crafted runner gliding on a smooth stainless steel track. This combination is solid and corrosion-proof with a low coefficient of friction and no moving parts. The base of each track is tapered to ensure clean motion as the runner enters and leaves the column.

Plus all critical pivot and slide points on the liftgate are protected by advanced anti-wear materials which require no routine lubrication. Spend more time serving your customers, and less time greasing your liftgates with the Anthony ReGEN.



SMART-POWER LIFTGATE BATTERY PACK™

Every ReGEN RAILTRAC comes standard with the Anthony Smart-Power Liftgate Battery Pack™. This dedicated power supply is mounted beneath the truck or trailer. It ensures the liftgate has proper power at all times and protects the tractor or chassis batteries from premature failure commonly caused by the elevated electrical demands of a liftgate.

FEATURES:

- Pre-assembled, plug-n-play package
- Sturdy stainless & aluminum enclosure
- Automotive-grade electronics
- 7-way aux pin connection requires no special trailer wiring
- Low power draw – 10A @ 12V max
- Automatic battery balancing
- Voltage drop and temperature compensation
- Low input voltage automatic shutoff
- Battery life tracking
- OLED diagnostic screen
- Smart trailer (CANBUS) ready
- Configurable outputs for external indicator lights
- External liftgate status display
- Premium group 24 pure-lead AGM batteries
- Optional wireless liftgate system monitoring



COMPACT & MODULAR

ReGEN's drive motors sit safely inside the liftgate columns and connect to the battery pack beneath the vehicle by only two cables. The drive cylinders can be completely replaced in minutes by removing only a few bolts and one electrical connector.

Large hydraulic rail lifts are powered by hydraulic pumps installed beneath the truck or trailer. Hydraulic fluid passes through a series of long hose runs to the liftgate. These hoses add significant installation time and require maintenance through the life of the lift to guard against breaks and leaks.

ReGEN's sealed, modular cylinder design makes the ReGEN easier to install and service than hydraulic equivalents.



© Copyright 2022 by Liftwave, Inc. dba RISE Robotics. All Rights Reserved.
US Patent 11255416 Patent Pending: WO2019/014259



FASTER INSTALLATIONS

ReGEN can be installed in a fraction of the time of similar hydraulic models. Its standard bolt-on columns can be attached to a rear frame quickly and aid in simpler replacement in the event of damage. With only one enclosure to hang and only a few wires to connect, an entire installation can be completed in just a few hours.

STANDARD FEATURES

FEATURES	ReGEN	OTHER HD RAIL LIFT
5,500-Pound Capacity	Yes	Yes
Galvanized Finish	Yes	Yes
96" or 102" Wide Models	Yes	Yes
84" Deep Platform	Yes	Yes
Energy Recovery	Yes	No
Oil Free Drive System	Yes	No
Grease Free Motion	Yes	No
Faster Cycle Times	Yes	No
Soft Stop & Start	Yes	No
White Glove Mode	Yes	No
Built-in Telemetry	Yes	No
OLED Status Display	Yes	No
Two-Cylinder System	Yes	No
Stainless V-Track	Yes	No
All-in-One Battery Pack	Yes	No
Automatic Mechanical Latches	Yes	No
All Temperature Performance	Yes	No
Battery Balancing	Yes	No
Predictive Maintenance	Yes	No

STANDARD FEATURES

- Hot Dip Galvanized Finish + Stainless Track
- 84" Deep All-Aluminum Platform
- Stop, Turn Tail Lights
- 5500-Pound Maximum Capacity
- Grease Free Pivot and Slide Points
- Rise Robotics Drive Cylinders with Energy Recovery, Soft Start & Stop, No Hydraulic Oil
- Wired and Wireless Telemetry Hardware
- OLED Liftgate Status Display
- Automatic Latching
- Smart-Power Liftgate Battery Pack™ with Pure-Lead AGM Batteries
- Bolt-On Installation





1037 West Howard St.
Pontiac, IL 61764

(815) 842-3383
sales@anthonyliftgates.com